

Realising potential



Norbury Manor
Business & Enterprise
College for Girls

Sixth Form Prospectus 2017–2018

*Heads,
you win!*

Page 1

*Positive
results*

Page 12

*Skye's
the
limit*

Pages 8–11

Students and alumni
share their stories

Dear Students,

Life after GCSEs is all about choices, your choices. Norbury Manor has a high-achieving Sixth Form that provides you, the student, with the skills you need to succeed. We provide excellent teaching, outstanding pastoral support and a wealth of opportunities for growth and personal development. You will have access to high quality university and careers advice and support. However, the world is changing at a rapid pace and you will need to be adaptive, creative, enterprising and courageous and encouraged to think globally, we will provide a wealth of opportunities for you to develop these key skills.

Our Sixth Form is vibrant, diverse and an integral and valued part of our school community. Sixth Formers enjoy an array of exciting opportunities that enable them to develop their leadership skills, explore new and interesting personal interests and hobbies, and achieve their academic aspirations. Sixth Form students have their own Sixth Form block with modern teaching rooms, a computer suite for private study and a large common room.

When you join Norbury Manor Sixth Form you will study in a happy, successful and caring environment where lifelong friendships are forged. If you think you have what it takes to add to our already thriving student community, please come and visit us to find out more, take the opportunity to see our facilities and talk to our students, they will tell you that they made the right choice studying with us.

Amanda Compton
Headteacher

*Nurturing leaders
of the future*



*Please take your seat,
your future is about
to begin...*

Richard Tyrrell, NMBEC *Head of Sixth Form* introduces the brilliant opportunities that await you



What's great about joining NMBEC?

We care that:

- You will experience a vibrant journey into your future with tailored subject pathways
- You will join a close-knit community where you will enjoy fantastic pastoral care
- NMBEC will provide you with a springboard to go on to further education, employment or an apprenticeship.

Will NMBEC suit me?

NMBEC has a supportive, friendly environment which will allow you to:

- Stretch yourself academically.
- Get involved in a wide range of clubs and activities.
- Think creatively, work independently and develop the skills necessary to succeed.

Is NMBEC ready for my future?

You will have access to:

- An experienced form tutor to guide you through your Sixth Form experience.
- Bridging Units so that you can manage the move from GCSE to A Level/Level 3 study.
- Ongoing support for transition between Year 12 and Year 13.
- Enrichment classes in, Entrepreneurship, Sports Leadership, DofE & Extended Project.
- Opportunities, encouragement and support for Work Experience, especially through 'Moving on Week'.

- A dedicated Careers Team to support you in your next steps.
- 1 to 1 support from a University Application advisor.
- A developing partnership with Hawk Training to support Apprenticeship applications.
- The NMBEC SEO Scholars programme which can provide upto 6 years of support in the Sixth Form and beyond into Russell Group universities and beyond into employment.
- A dedicated private study area.
- 22 specialist teaching rooms.
- A stunning common room.
- 450+ computers.

How good are we?

We are making progress in our journey.

- We are a 'good' Sixth Form but we have the ambition and desire to be an 'Outstanding' Sixth Form.
- What did Ofsted say about us in 2013?: 'sixth form curriculum is well matched to students' needs. Teaching is monitored rigorously and prompt action taken as required so that students make rapid progress.'

So, if you are a forward thinking individual and are excited about the opportunities available to you at the NMBEC Sixth Form you need to visit us at our Open Evening.

Why study here?

Yaso Tavares
Oxbridge Advisor
& Senior Sixth Form Tutor

I am a senior 6th form tutor and an advisor on applications for Oxbridge, other high ranking Russell Group universities, and very competitive courses such as medicine.

My role involves supporting you on ways to prepare for interviews, specific entrance tests such as BMAT, and on making appropriate links with universities by attending student conferences, summer schools and subject specific open days.

I also teach A level English Literature at NMBEC.

Zeena Gordon
Careers Guidance Counsellor

My role, in a nutshell is to empower, educate, inform, advise, guide, inspire, motivate and support you into positive opportunities after completing your studies at NMBEC.

I deliver careers guidance in a number of ways:

- *1:1 structured, impartial and independent careers guidance appointments*
- *Facilitating and delivering group sessions*
- *Collaborating with staff to provide effective careers education*
- *Careers talks on qualifications, options, employability and training*
- *Attending NMBEC events to give advice on education, employment and training*

Emma Nicholls
Pastoral Support Assistant

The main aim of my role is to ensure that you achieve your potential, are motivated, engaged and fully prepared for life beyond our Sixth Form. Part of my job is to implement the college policies on discipline, behaviour and attendance, providing a robust but caring support system.

I do this by supporting the Head of Sixth Form and offering you individualised pastoral care and support.

Stephen Ireland
NMBEC UCAS Advisor

As the college's UCAS Advisor, I will help you to negotiate your way through the process of applying for higher education courses via the Universities and Colleges Admissions Service.

I will work closely with you in one-to-one meetings to examine your options, offer advice regarding suitable courses and help to ensure that your application and, in particular, your personal statement, is as strong as possible.

Welcome

From the Head Student Team
at NMBEC Sixth Form



From left: Lauren, Halle, Rubab, Ikechi and Evangeline

"You will find our Sixth Form a very caring place where we are all valued as individuals. Take the time to read on and meet our current students and our alumni to see where your time at NMBEC can lead you. We can't fit everything into a brochure so please visit us and take a look around either on our open evening or during the school day - we will be happy to show you around."



Ikechi
History, Economics, Business Studies and Philosophy & Ethics

I came to the NMBEC Sixth Form from a different school and what could have been a difficult transition to make was made much easier to deal with because of the support available and the great atmosphere. It didn't take long at all to settle in and become part of the Sixth Form community.

I chose NMBEC for my sixth form education because of the many opportunities it offered. I am planning to go to university when I finish here to study Accounting and Finance which will take me into a career in accountancy.

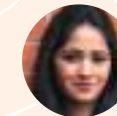


Lauren
Psychology, English Literature and Geography

I left NMBEC at the end of Yr 11 and went to another sixth form provider but after a year had passed I realised that NMBEC was the place where I would best achieve my potential and I returned. I appreciate the support I receive from my teachers and feel valued as an individual.

I have become more confident, independent and organised over the last year and this has helped me to transition well to study A Levels.

In terms of my future, I hope to study Psychology at university before moving into the police force as my chosen career.



Evangeline
English Literature, Economics and Maths

Joining Year 12 is a massive leap from studying for GCSEs and you will face many challenges. Personally, I thought that the jump to A level study would be fine for me and that my work ethic would carry me through, but I was wrong! The workload increased, the depth to which you study topics is greater and sometimes I struggled to keep up. However, with the continuing support of my teachers, (who believed in me when even I didn't), I have developed a deep appreciation for my A Level subjects.

It is really important to enjoy the subjects you study at A Level. You will be studying these subjects for 2 years and you should "do what you love". Economics is my favourite subject and the work I have done at A Level has given me a deeper understanding of the concepts. It never really felt like hard work because I enjoy it so much.

My plans for the future are to study Economics or Law at university with a view to either becoming a teacher or a barrister.

Sixth Form Curriculum

Our Sixth Form is well established and flourishing, offering a modern and relevant curriculum. We offer a wide range of AS, A2 and BTEC courses for students of all abilities and further new courses will be introduced as the Sixth Form continues to grow.

We offer a 3 year pathway for some students to allow them to consolidate their Level 2 learning in the first year before moving to an appropriate Level 3 pathway for the next 2 years. Students without an A*-C grade in Maths and English will be required to attend retake classes in these subjects.

The following subjects are being offered*:

Art Graphic	Health & Social Care
Communication	History
Biology	Islamic Studies
Business Studies	Law
Chemistry	Mathematics
Computer Science	Media Studies
Drama	Music
Economics	Philosophy & Ethics
English Literature	Photography
Extended Project	Physical Education
Qualification	Physics
Fine Art	Psychology
French	Sociology
Geography	Spanish
German	Textiles
Government & Politics	3D Design

* The subject offer may vary from that stated above. Some subjects may not run if there is insufficient uptake or they may run as an AS only option.

Subjects will be arranged into option blocks based on student preferences in order to accommodate the majority of students' first choices. Students should complete their application form indicating subject preferences and reserve choices.

Enrichment

Sixth Form students have access to a wide variety of enrichment activities. All Year 12 students will take part in an adventure day spent at Blacklands Farm to build a sense of teamwork and co-operation. Students will also have opportunities to visit the Houses of Parliament, universities and businesses as well as being able to take part in subject specific visits. Enrichment courses are available that foster a spirit of social enterprise and an awareness of the business world. Numerous clubs and activities outside of the classroom are also available to the students and include the Duke of Edinburgh Award Scheme and the Debating Club.

We are part of the SEO Scholars programme and this supports our Sixth Form students to access top flight universities, industry insight days, work experience in top firms and attendance at dedicated university Open Days.

"The Sixth Form curriculum is well matched to students' needs."

OFSTED 2013



Rubab
English Literature, Media Studies and History

Year 12 is a true test of endurance! With academic work and extra-curricular activities my time management and organisational skills have been tested.

I am pleased I made my decision to study for my A Levels at NMBEC and as a result have developed into a more independent person. NMBEC doesn't just focus on our academic success it also focuses on us as individuals and gives us opportunities to develop our personal skills.

NMBEC is a safe environment and you will do well here and be supported to reach your full potential.



Janaan

Business Studies, Media Studies, Biology and Economics

"It is the perfect environment to grow into the young adult you aspire to become."

This year has been packed with a whole range of things from exams, to Duke of Edinburgh expeditions and university open days so there is never a dull moment, but It's not all studying, teachers make sure that you take part in lots of exciting things to support your UCAS application.

At NMBEC, you are supported through the transition from Year 11 whilst still being allowed to explore your new independence as a sixth form student. It is the perfect environment to grow into the young adult you aspire to become.

NMBEC has enabled me to take part in lots of business events and work experience during my time here. Some examples include business trips to Brussels, becoming an SEO Scholar, working at a prestigious London law firm and becoming a business mentor for the NMBEC Entrepreneurship Summer School.



Halle
Art Diploma, Drama and Media Studies

Whether you have been here since Year 7 or are planning to join us in Year 12, you will soon find that the NMBEC Sixth Form is a welcoming community that makes everyone feel at home. This sense of belonging, combined with ongoing academic support and individual attention is a strong feature of NMBEC and is key to its success.

No matter where you choose to study post-16 you will face difficulties as you settle in and study at a much higher level compared to previously, but join us and you will be supported through the tough times by the staff and students alike.

PSHE

This is compulsory throughout the Sixth Form programme of study. Students will spend time with their form tutors following a programme of study which includes topics as varied as study skills, careers guidance and the UCAS process.

Participating

Sixth Form students benefit from being a part of a flourishing, caring community and are encouraged to take part in events linked to the wider life of the college to develop their leadership and citizenship skills.

Additionally, we organise a range of activities throughout the year to encourage students to look beyond their time in the Sixth Form and plan towards their futures. These events include visits to universities and careers exhibitions, work shadowing and mentoring programmes pairing our students with those already at university.

During the Sixth Form, students will develop the skills required in order to be successful in higher and further education or employment.

Admissions Policy Sixth Form 2017

In September 2017, there will be 150 places available in Year 12. A maximum of 50 places will be made available to external candidates. Whilst being predominantly a girl's school, boys are welcome to apply for a Sixth Form place.

Students will only be admitted to the Sixth Form if, in the judgement of the Sixth Form Team, a suitable programme is available for them that is appropriate and meets their needs.

Students are only eligible to study at NMBEC Sixth Form if they are on a full time programme. This comprises 4 AS levels (or equivalent) in Year 12 and 3 A2 levels (or equivalent) in Year 13.

The Sixth Form operates an open door policy given that applicants have reached the required entry-level standard. These are:

Course	General Requirements
A Level Pathway	<p>6 passes at GCSE at grade A*–C, including a minimum grade of C in both Maths and English Language.</p> <p>Minimum of B grades in all of the subjects you wish to study at AS/A2 level unless:</p> <ol style="list-style-type: none"> The subject has no subject specific entrance requirements other than the general NMBEC requirement stated above; or The subject has additional subject specific requirements to those stated above; or The subject will accept students with alternative qualifications or will consider you if you have not studied the subject previously.
BTEC Level 3 Pathway	<p>5 GCSE passes at grade C or above in any subject, but including a minimum of D in both Maths and English Language.</p> <p>Individual students may be assessed on a case by case basis.</p>
BTEC Level 2 Pathway	<p>4 GCSE passes at grade D or above to include one of Maths, English Language or English Literature.</p> <p>Candidates with slightly lower grades are invited to discuss their requirements with the college.</p>

Alternative qualifications may be accepted instead of GCSE at the College's discretion eg. IGCSE, GNVQ, BTEC.

Candidates who fall between the BTEC Level 3 requirements and AS Level requirements will be eligible to take a BTEC Level 3 double award plus 1 AS level subject.

Students will be expected to study a minimum of 3 A Level subjects or their BTEC L3 equivalent in addition all students follow a PSHE, tutorial and enrichment programme.

In common with all Sixth Forms, the subject offer may vary from year to year based on student numbers. For details of the curriculum offer for your year of entry please contact the college directly or visit the website www.nmbec.org.uk

From time to time we are approached by students requesting places after the beginning of the academic year when courses are already underway. On these occasions we will consider each request on a case by case basis but it is likely that many courses will be oversubscribed and no spaces will exist. It is equally likely that in the professional opinion of the teaching staff that a student starting a course late would not result in a positive outcome due to the volume of work missed that would need to be caught up and in these cases we would not be able to consider late applicants.

Progression from Year 12 into Year 13

Students should achieve a minimum of a D grade in their subjects at AS and also pass the first year of their BTEC courses, where applicable, if they wish to continue into Year 13.

The expectation is that students will continue onto 3 A2 courses. In exceptional circumstances, students who achieve less than this may continue into Year 13 and start A2 study at the school's discretion. These "exceptional circumstances" are likely to include situations in which the students achieve significantly less than their predicted grades at AS for reasons that were out of their control.

Age Limits

Students can only begin a course if they are under 19 years of age on the first day of term

for the ensuing academic year. This means that students may start either Year 12, 13 or 14 but may not continue a course or start a subsequent year if they will be 19 years of age at the start of the next academic year.

We are unable to admit external students into the Sixth Form if they are Year 14 students or have completed 2 years of Sixth Form education at another institution.

Applications

Year 11 students at Norbury Manor will be given an application form automatically. Students from other schools may apply through the application form available from Norbury Manor Business and Enterprise College. Late applications may be considered if a place on an appropriate course is still available. However, no application will be considered later than 2 weeks after the commencement of any course.

Residency Criteria

Entrance into the Sixth Form is subject to the regulations regarding nationality, residency status and eligibility to study in UK school Sixth Forms that apply at the time. Currently, students can be admitted into the Sixth Form if:

1. They are British citizens and/or EU nationals
2. Non-EU nationals can be admitted into the Sixth Form if, for example:
 - They have "Exceptional" or "Indefinite Leave to Remain" in this country;
 - They have refugee status;
 - Their residency is a condition of their parents legal employment status in this country.

Students who are classified as "Overseas Learners" or who have Student Visas cannot be admitted to the Sixth Form for funding reasons.

Oversubscription

After the admission of students with Statements of Special Educational Needs or an Education Health Care Plan, where Norbury Manor is

named on the Statement or Plan, in the event of oversubscription, priority will be given to applicants in the following order. However, students already in attendance at NMBEC will be given priority over external candidates within each priority.

1. Looked After Children and Previously Looked After Children. Looked After Children are children in public care at the date on which the application is made. If an application is made under this criterion, it must be supported by a letter from the relevant Local Authority (Children's Services) Department. Previously Looked After Children are children who were looked after, but ceased to be so because they were adopted, or became subject to a residence order or special guardianship order. If an application is made under this criterion, it must be supported by a copy of the adoption order, residence order or guardianship order, together with a letter from the local authority that last looked after the child, confirming that he or she was looked after immediately prior to the order being made. This documentary evidence must be submitted with the application.

2. Students for whom an appropriate course is available.
3. Geographical distance from the college measured as a straight line from the front gates of the college to the front gate of the student's place of residence using Infomap software. The student's place of residence is the home of the person who has parental responsibility for the student and where the student would normally be resident for all or the greater part of each week. In the event of applicants being equidistant from the college, lots will be drawn to determine who is offered the place.

Waiting List

No waiting list is maintained for places in the Sixth Form. Detailed subject specific entrance requirements will be available at the Sixth Form Open Evening.

Where can NMBEC take you?

Lydia

Alumni

2006–2013
NMBEC
student

2013–present
Imperial
College London
Undergraduate
student
– Medicine

I joined Norbury Manor in Year 7. From the very beginning I received an amazing amount of support from my teachers who always stretched me academically and encouraged me to develop myself through extra-curricular activities.

Throughout my time at NMBEC, I was involved in the college's orchestra, choirs and productions, and I received the college's music scholarship enabling me to achieve a distinction in Grade 8 Singing.

From Year 11, I benefited greatly from the SEO mentoring programme which focused on developing both my academic and non-academic skills in order to realise my aspiration of studying Medicine. My mentor did a fantastic job in ensuring I remained focused academically whilst still pursuing my extracurricular interests to a high level.

I was elected Head Prefect in Year 11, and Head Girl in Year 13, which was an honour and helped to hone my leadership skills.

After being successful in my GCSEs, I decided to remain at Norbury Manor for Sixth Form. At A level, I chose to study English Literature to AS and Biology, Chemistry and Physics to A2. As a result of many hours of study and supportive teachers, I achieved A grades in all of these subjects which qualified me to study Medicine at Imperial College London.

I am now having a wonderful time at medical school and the strong foundation I received at NMBEC is proving invaluable. In the future, I hope to become a surgeon or hospital doctor.

Norbury Manor is a supportive academic environment which helped me to flourish and reach my potential. Studying Medicine at Imperial is an awesome privilege that would not have been possible without all the support I received during my time at Norbury Manor. I am truly grateful!

Skye

Alumni

2006–2013
NMBEC
student

2014–present
Goldsmith's
University
Undergraduate
student – Creative
Writing



Moving to NMBEC was the best opportunity that was ever presented to me. I made friends for life, and met many teachers and students who taught me so much, and who deserve so much respect and thanks from me personally. I didn't always believe in myself enough and sometimes felt that the pressure of trying to succeed was going to lead to the opposite. However NMBEC always supported me, and encouraged the best in me, whilst still giving me the freedom to make my own decisions and be who I am.

I stayed at NMBEC for my Sixth Form studies because moving to NMBEC in Year 9 had been so beneficial to me and I wasn't ready to leave yet. I studied Drama, English Literature, History, Psychology at A2 and General Studies at AS. I found myself surrounded by fantastic people who made me feel comfortable and gave me the freedom, opportunities and the discipline to achieve the best grades I could.

I knew NMBEC was the best place for me to achieve my goals and I was not willing to risk moving somewhere else after NMBEC had done so much to restore my love of learning. In the end I pushed myself harder than I ever thought I could, and was able to succeed way beyond even my own expectations. Now, I'm studying a course I love in a city I adore and am enjoying every second.

"I was not willing to risk moving somewhere else after NMBEC had done so much to restore my love of learning."

I have so many vivid memories of NMBEC including the effort we always put in for special occasions and events such as Red Nose Day, World Book Day and other fundraising ventures. I'll never forget how the college brings people together and never shies away from having some fun, which I think is so vital to making education enjoyable. I remember my final drama A Level performance which was such a pleasure and a privilege to be a part of even though we were all so nervous. I remember the teachers that encouraged my work. I remember winding down in the common room, playing "foosball" or pulling pranks on each other just to keep spirits up in times when everyone was tired or stressed from working so hard. But most of all I remember that we worked as a team, and I am proud to have been a part of it all.

Shinal

Alumni

2006–2013
NMBEC
student

2013–present
Virginia
Commonwealth
University, USA
Undergraduate
student
– Chemistry



NMBEC proved to be the ideal Sixth Form for me. I felt the disruption of moving to another school would impact negatively on my education. I wanted to be at a Sixth Form where I was already well established and the teachers knew me and my learning style. I chose to study Biology, Chemistry, and Maths to A Level and Geography to AS Level.

In August 2013, I decided to take a gap year to further explore my higher education options. During this time I chose to apply to American universities to study Chemistry because of the numerous opportunities the US offers to students. My teachers at NMBEC helped me enormously with my applications to American universities. The college and teachers have been incredibly supportive and have provided me with confidence as I made a big decision to apply to study abroad.

My gap year has given me a great opportunity to step outside of my comfort zone and get a new perspective. My decision to study in the USA will offer me a once-in-a-lifetime opportunity to experience and immerse myself in American culture.

I had a wonderful time at NMBEC. I have made such wonderful friends for life and I will always cherish the great memories. NMBEC will always have a place in my heart.

“My abiding memories of NMBEC are very warm and happy ones. It’s a school where every student matters, and no one is left behind.”

2004–2011
NMBEC
student

2011–2014
Oxford University
Graduated with
degree in
Geography

2014–present
GlobalGiving UK
– Intern

When I started at NMBEC in Year 7, I was extremely shy, with few aspirations. It soon became clear that NMBEC was different from the other schools I visited when I was looking for a secondary school, it had a really unique and friendly atmosphere, and such a huge variety of people. I knew I would like it there.

I loved school and slowly my confidence grew, and I worked hard to achieve good grades. When it came time to consider my post-16 education I realised I’d enjoyed my time at NMBEC and didn’t want it to end! I knew that the excellent teaching and support system would get me through my A Levels, and I was excited by the opportunities that the Sixth Form had

to offer. The new Sixth Form building was also about to be finished, and I didn’t want to miss out on that!

In Sixth Form, I was elected Head Girl which gave me a lot of responsibility in the school, and helped to boost my confidence. With the help of my teachers, I managed to continue my academic success, and get into Oxford University. Now, after three very hard but enjoyable years, I have finished university with a degree in Geography and am preparing myself for the world of work by taking on an internship to gain experience for a career working in the Global Development sector.

Sarah

Alumni



Sixth Form A Level Results 2016

A2 subjects	Entries	Grade A*-A	% A*-A	Grade A*-B	% A*-B	Grade A*-C	% A*-C	Grade A*-E	% A*-E
Art & Design – Graphics	1	0	0	0	0	0	0	1	100
Art & Design – Fine Art	2	0	0	2	100	2	100	2	100
Art & Design – Textiles	2	0	0	2	100	2	100	2	100
Biology	9	1	11	2	22	5	56	8	89
Business Studies	6	1	17	2	33	6	100	6	100
Chemistry	9	1	11	4	44	7	78	9	100
Economics	14	1	7	3	21	10	71	14	100
English Literature	14	1	7	5	36	12	86	14	100
French	1	0	0	0	0	1	100	1	100
Geography	4	0	0	1	25	3	75	4	100
Health & Social Care	1	0	0	0	0	0	0	1	100
History	17	2	12	7	41	13	76	17	100
Information Technology	7	0	0	2	29	6	86	7	100
Mathematics	8	3	38	4	50	8	100	8	100
Media Studies	8	0	0	7	88	8	100	8	100
Physics	2	0	0	0	0	0	0	1	50
Polish ¹	1	1	100	1	100	1	100	1	100
Portuguese	1	1	100	1	100	1	100	1	100
Psychology	12	1	8	2	17	7	58	12	100
Religious Studies	14	3	21	8	57	13	93	14	100
Russian ²	1	1	100	1	100	1	100	1	100
Sociology	3	0	0	1	33	3	100	3	100
Totals	137	17	12	55	40	109	80	135	99

1 Year 12 Student
2 Year 11 Student

BTEC & Diploma subjects	Entries	Grade A*-A	Equivalent % A*-A	Grade A*-C	Equivalent % A*-C	Grade A*-E	Equivalent % A*-E
L3 Health and Social Care	14	9	64	14	100	14	100
L3 Art Technical Diploma	10	6	60	10	100	10	100

2016 results summary	Entries	Grade A*-A	Equivalent % A*-A	Grade A*-B	Equivalent % A*-B	Grade A*-C	Equivalent % A*-C	Grade A*-E	Equivalent % A*-E
A level and BTEC L3	161	32	20	70	44	133	83	159	99

A2 & L3 BTEC results comparison	NMBEC 2016	NMBEC 2015	NMBEC 2014	NMBEC 2013	NMBEC 2012	NMBEC 2011	NMBEC 2010
A*-B equivalent %	44	47	40	40	43	31	34
A*-E equivalent %	99	99	100	98	98	97	97

Where are they now? Honour Roll 2015

Name	Course	Higher/Further Education Destinations	Name	Course	Higher/Further Education Destinations
Tamara	Sociology	University of Warwick	Mahrukh	Finance with Management	University of West London
Michelle	Psychology	Queen Mary, University of London	Amy	Design for the Stage of Speech & Drama	Royal Central School
Safiya	Graphic Design	Ravensbourne College of Art & Design	Jade	Creative, Professional Writing & Illustration	University of Worcester
Bryana	Biology	Imperial College London	Shamma	English	Queen Mary, University of London
Kafiya	Nursing	London South Bank University	Ruun	Mathematics & Finance	City University London
Sade	International Relations & History	SOAS, University of London	Tasnim	Psychology	City University London
Faiza	Law	SOAS, University of London	Ariba	Early Childhood Studies & Education	University of Roehampton
Lava	Computer Science	University of West London	Chisom	Chemical Engineering	University of Hull
Ryanne	Psychology	Coventry University	Simi	Sociology & Criminology	Coventry University
Charlotte	Drama & Theatre Arts	St Mary's University, Twickenham	Heeral	Criminology & Criminal Justice with Psychology	De Montfort University
Djihane	Psychology	University of Reading	Shari	Event Management	Coventry University
Zainab	English	University of Greenwich	Seevana	Engineering	University of Manchester
Zahra	English	Kings College London	Wasim	Mechanical Engineering	Kings College London
Leterece	Textiles with Business Studies	University of Brighton	Sana	History	Goldsmiths, University of London
Carmilla	Drama	University of Greenwich	Athena	Hispanic Studies	University of Liverpool
Zuha	English	Queen Mary, University of London	Sahar	Biomedical Sciences	University of Roehampton
Michelle	3D Design & Craft	University of Brighton	Mansoor	Engineering	Brunel University London
Amber	Drama & English Literature	University of Greenwich	Nia	Modern Liberal Arts	University of Winchester
Lois	English & Drama	University of Northampton	Kinari	Geography	Queen Mary, University of London
Dawn	Media Studies	University of Portsmouth	Sonali	International Relations	University of Southampton
Kenrique	Spanish & Chinese	Nottingham Trent University	Byronnie	Professional Music Performance	The Academy of Contemporary Music
Caris	Social Psychology	Loughborough University	Samman	Economics	University of Greenwich
Thomas	Economics	City University London	Jawarya	Aeronautical Engineering	University of Brighton
Stephanie	Youth Studies	London Metropolitan University	Abi	Civil Engineering	Coventry University
Stacey	Human Geography	University of Hull	Michellina	Psychology	City University London
Rianna	Nutrition & Health	Edge Hill University	Nicola	Textile Design	Birmingham City University
Aaminah	Economics & Arabic	SOAS, University of London	Elikem	Tourism & Business	University of Chester
Sharna	History with Journalism	University of Hertfordshire	Ieva	Sociology	University of Northampton
Komal	Psychology	University of Birmingham	Sarita	Psychology	University of Roehampton
Nabilah	Education & Social Science	St Mary's University, Twickenham	Tiffani	Childhood & Youth Studies	University of Northampton
Hirra	Law	SOAS, University of London	Shybah	History	Queen Mary, University of London
Jozefina	Sports Therapy	Hartpury College	Ithar	Software Engineering	University of Greenwich
Megan	Nursing	University of Leeds			
Tiasha	Psychology	University of Northampton			
Joelle	Politics & Economics	University of Leicester			
Mahnoor	Pharmacy	Keele University			

Rise & shine



Norbury Manor
Business & Enterprise
College for Girls

Norbury Manor
Business & Enterprise College
Kensington Avenue
Thornton Heath
Croydon
Surrey CR7 8BT

T. 020 8679 0062
E. nichollse@nmbec.org.uk
www.nmbec.org.uk

 @NorburyManor



Leading education
and social research
Institute of Education
University of Sydney

ICE Specialist Partner: Initial Teacher Education



National
Standard
for Enterprise
Education




Healthy School



NPQH Leadership
Development School
National College
for School Leadership




Challenge Award
FOR EXCELLENCE IN PROGRESS FOR
MORE ABLE AND TALENTED PUPILS
MADE RE-ACCREDITED SCHOOL 2011


centre for education & industry
excellence in enterprise education

 INVESTORS
IN PEOPLE


INTERNATIONAL
SCHOOL AWARD